
ENACT 5.X IMPORTING MS PROJECT 2000

Products:

Information in this document applies to the following products: Enact 5.x and Microsoft Project 2000.

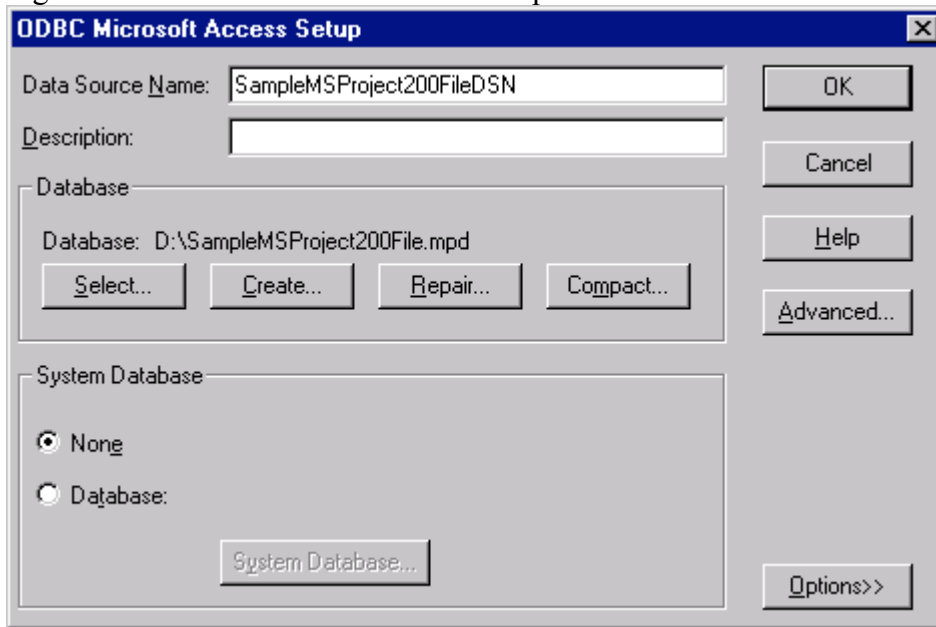
Summary:

This document describes the steps needed to import MS Project 2000 plans into Enact 5.x.

Solution:

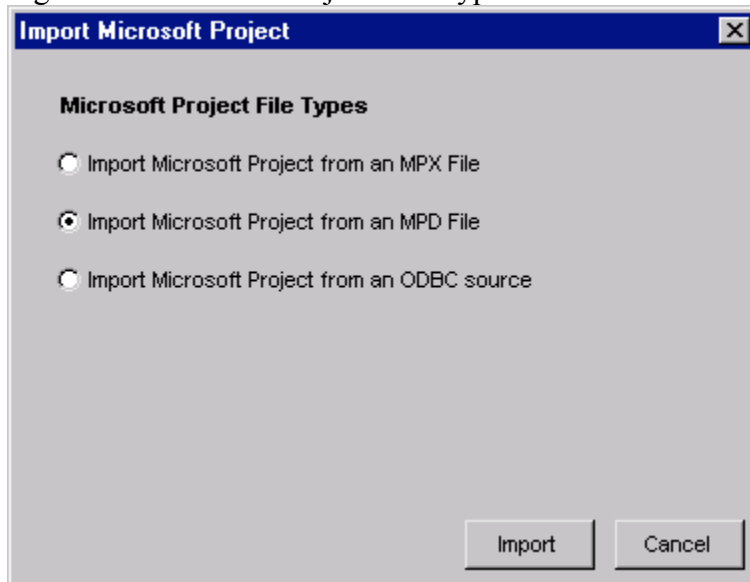
1. Create a **User DSN** in the ODBC Data Sources.
 - a. Go to Start, Settings, Control Panel, Administrative Tools, Data Sources (ODBC).
 - b. Click the Users DSN tab.
 - c. Click on the Add Button
 - d. Choose Microsoft Access Driver and click the Finish button.
 - e. Under **Data Source Name** enter a name for the project file (save this name you will use it later).
 - f. For Description, enter any description.
 - g. In the Database section click the Select button to browse your files.
 - h. Browse to the directory.
 - i. Change List Files of Type to “All Files (*.*)”
 - j. Choose the filename of the MS Project 2000 (mpd) file you wish to import, and click OK.
 - k. Click OK on the ODBC Microsoft Access Setup window, figure 1 shows an example.

Figure 1 – ODBC Microsoft Access Setup Screen



2. Login into Enact via the Enact Login screen.
3. Import the Project file in Enact
 - a. Choose File...Import Microsoft Project
 - b. Choose the “Import Microsoft Project from an MPD file option” radio button as in the following figure 2.

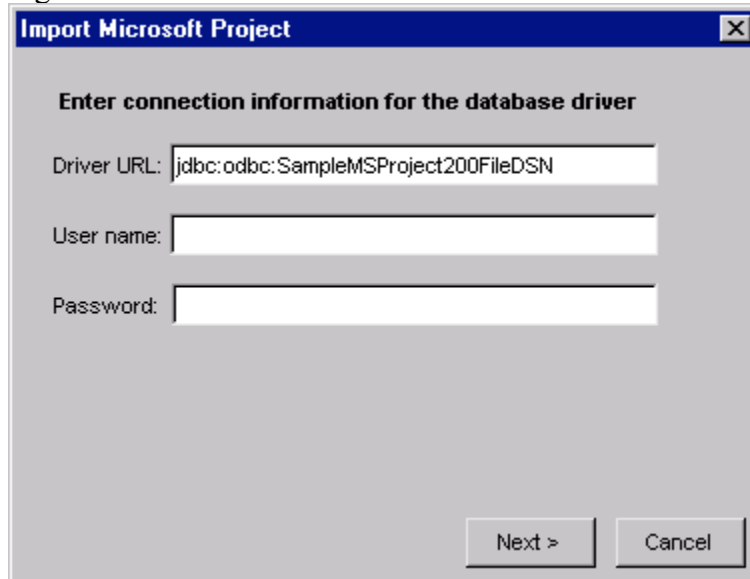
Figure 2 – Microsoft Project File Types Screen



- c. Click the Import button.
- d. Browse to the file to import and click the Open button, which gives the Import Microsoft Project screen.

- e. Under Driver URL: jdbc:odbc:<datasource name>, change the “<datasource name>” to the **Data Source Name** entered in Step 1e.
- f. Leave the Username and Password fields blank and click the next button as in figure 3.

Figure 3 – Connection Information Screen



The screenshot shows a dialog box titled "Import Microsoft Project". Inside the dialog, the text "Enter connection information for the database driver" is displayed. Below this text, there are three input fields: "Driver URL:" with the value "jdbc:odbc:SampleMSProject200FileDSN", "User name:", and "Password:". At the bottom right of the dialog, there are two buttons: "Next >" and "Cancel".

- g. Choose the Project to Import
- h. Follow the import instructions from the User Manual to import the Project File.

More Information:

If you need additional assistance, contact Enact Technical Support at:

support@enact.cc

<http://www.enact.cc>